

Welcome to Transition to Home

The Transition to Home service, set up by the South Australian Government, is a transitional community housing service for NDIS participants who no longer need to be in hospital.

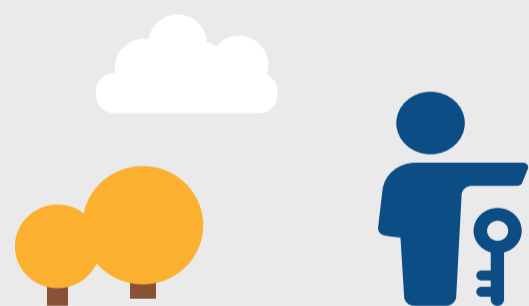


The Transition to Home service is available for up to 6 months for NDIS participants **who no longer need to be in hospital**. It can be used while a long-term home is being modified or found.



You won't find the doctors, nurses or allied health staff you might see in hospital here.

The South Australian Department of Human Services will provide some support while you live here. Support workers can help you with personal care, meal times and your daily routine. They help you to live the life you choose, including access to community activities and opportunities to develop social skills.



Getting out of hospital sooner means reconnecting with regular everyday social, work and recreational activities. Most importantly, it's the first step towards moving home.

