



Engagement Across Sectors: A Key Strategy to Kickstart Health in All Policies

**International conference on Health in All Policies:
Progressing the Sustainable Development Goals
Adelaide, Australia, 30th-31st of March, 2017**

Dr. Maureen Wijngaarde-van Dijk, MPH
Director of Health, SURINAME



Overview



- Quick Assessment (Delphi Rounds)
- Health Inequities in Suriname
- Governance structure:
Policy Areas and Policy Working Groups
- Achievements
- Challenges
- Questions

REPUBLIEK SURINAME
REPUBLIC OF SURINAME



GEZONDHEID
OP ALLE BELEIDSGEBIEDEN
HEALTH IN ALL POLICIES



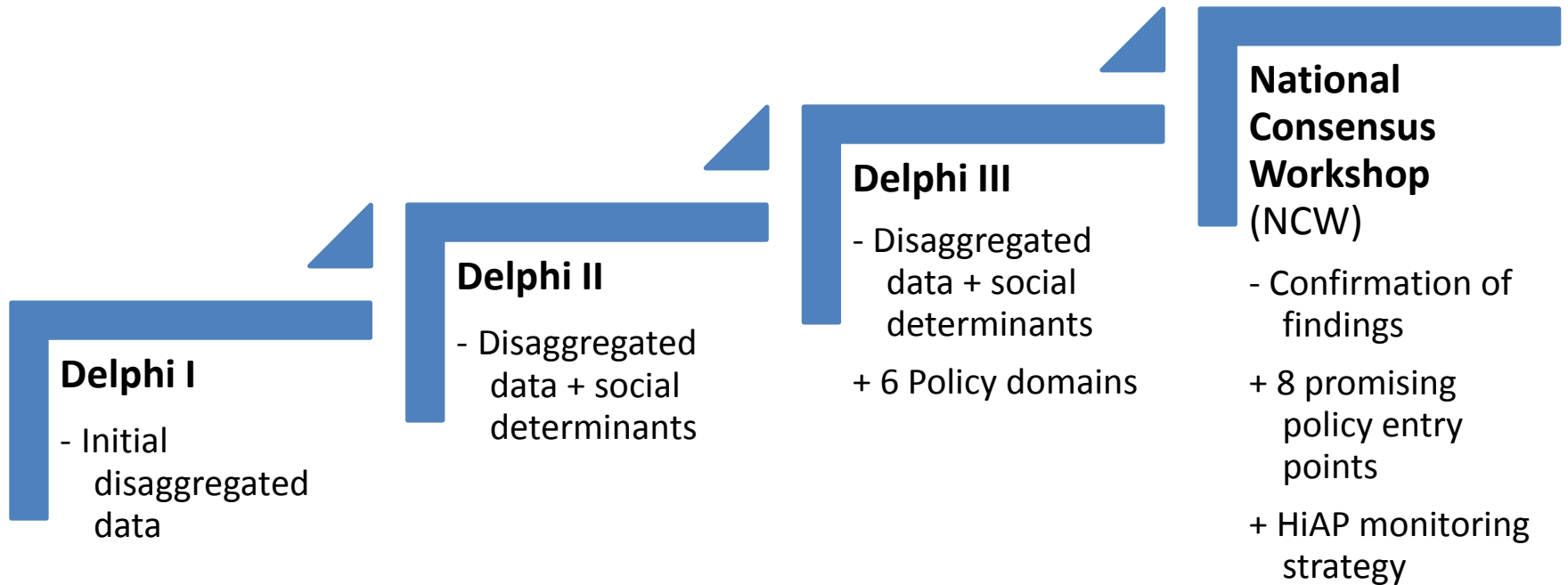
Quick Assessment



- Government of Suriname made request to PAHO/WHO
- BoD: 170,000 productive life years lost annually
- Started from BoD, drilling down to underlying SDH and RF
- Three Delphi rounds, collection of data on health and health inequities
- Results were
 - 1) Health Inequities and 2) Promising areas for action

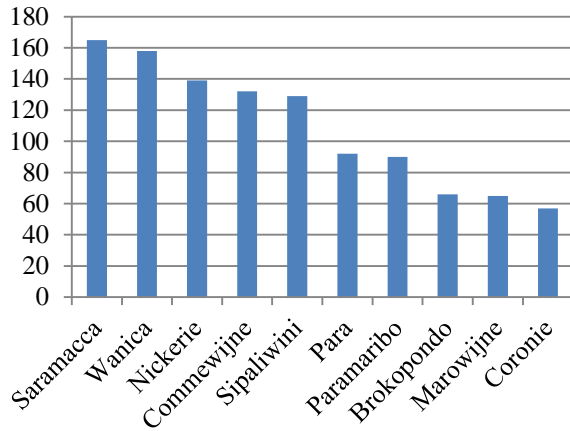


HiAP Quick Assessment Process

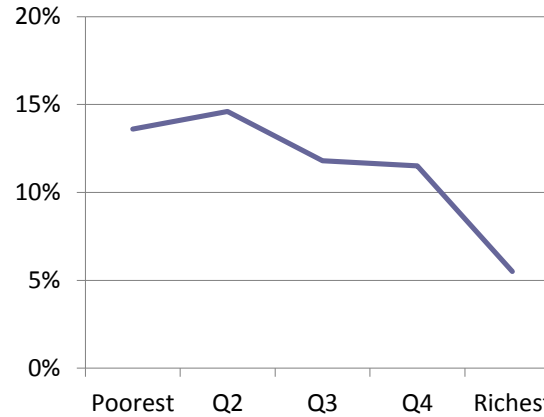




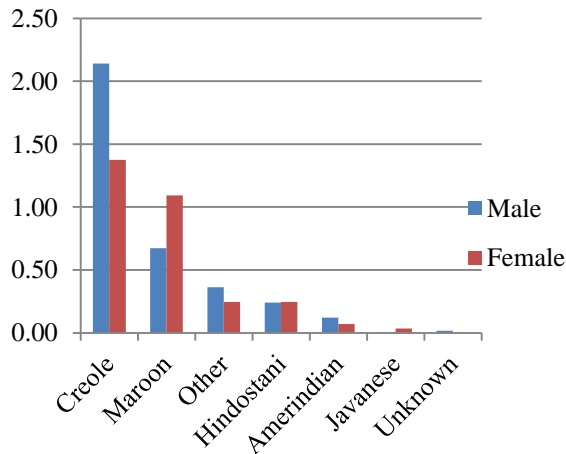
Health Inequities



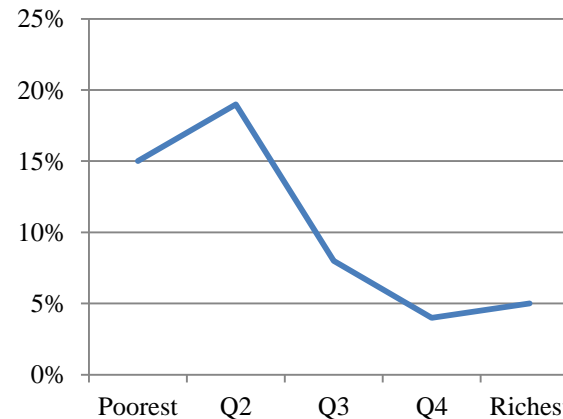
Chronic Kidney Disease incidence by district per 10,000. Source: Census data, Suriname Bureau of Statistics (2012)



Rate of diabetes mellitus by wealth quintile. Source: Suriname STEPS study, 2013.



Prevalence of HIV by ethnicity and sex per 10,000. Source: HIV infections, Academic Hospital Surveillance data (2014)



Prevalence of smoking by wealth quintile. Source: Suriname STEPS study, 2013.



Governance Structure

8 Policy Working Groups

PWG1 Education and jobs

PWG2 Spatial planning and management

PWG3 Built environments

PWG4 Integrated approach at community and household levels

PWG5 Consumables (incl. food)

PWG6 Training and employment of staff

PWG7 Health system's governance

PWG8 Health system's organization and management



Intersectoral Action on Data Gaps

Data Gaps (From Quick Assessment)	What is done about it (HiAP SU MS)
Risk factors and magnitude of health inequities (data disaggregation)	Modifications to administrative and service data systems, repeated surveys and ad hoc surveys (add RFs, Inequity Dimensions)
Little known Burdens of Disease (Self Harm and Adverse Medical Treatment)	Include these in existing surveys + key informant interviews & special study at Academic hospital
Correlation between inequity dimensions	Reanalysis of existing data sources
Why are there inequities across ethnic groups?	HiAP Research Agenda with small qualitative studies to be conducted by Masters Students



Achievements

- 12 most promising candidate policies vetted, voted and selected (pending adoption by Council of Ministers)
- Mobilization of in-country capacity in a HiAP community through various Policy Working Groups and Monitoring Strategy Group (100+ people)
- How to approach starting a HiAP process from the beginning
- How to achieve results with meagre resources



Challenges

- Financial austerity, both at country level and faced by government employees
- Adoption by Council of Ministers pending
- How to keep everyone involved with frequent reshuffling, government offices in flux
- Maintaining effective communication and collaboration



A million thanks

- **Pierre Pratley**
- **Erik Blas**
- **PAHO/WHO**
- **Suriname HiAP community**



Questions

