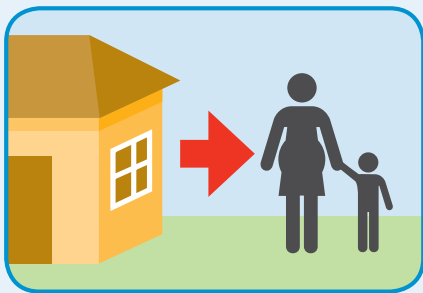


# Lead-aware guide to carpet removal in Port Pirie

Lead contaminated dust is likely to be present in carpets (and underlays) even if the carpet appears to be in good condition. If carpet removal is not carried out carefully, other areas of the home such as children's play areas, bedrooms or living areas can easily become contaminated with lead dust.

Whether you are removing carpet yourself, or you choose to use professional carpet layers/removalists, there are a number of things you will need to do to plan and prepare your home for carpet removal.



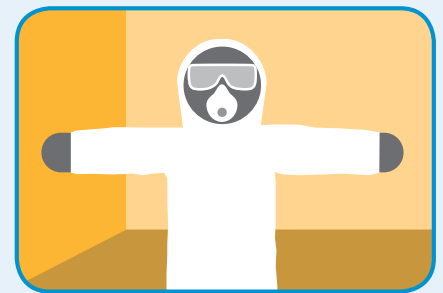
## PLAN

Relocate children and pregnant women during the carpet removal process and until the clean up is completed



## PREPARE

Remove or cover furniture, remove curtains/blinds, pack up small items into boxes



## PROTECT

Use protective clothing (disposable coveralls and shoe covers, face mask, goggles, gloves)



## REMOVE

Minimise dust generation by using a spray pack with water and wrap carpet in plastic after removal



## CLEAN UP

HEPA vacuum, mop and wet wipe all horizontal and vertical surfaces with sugar soap

### Also remember:

- > Ensure you have the right equipment ready
- > Have an area cleared, or trailer ready, to dispose of carpet as soon as possible
- > Seal adjoining doors to prevent contamination of other rooms
- > Remove coveralls and shoes covers before leaving the work area
- > Keep doors of room being recarpeted closed when possible
- > Wait 3 hours after carpet removal to begin clean up to allow dust to settle
- > Do use a vacuum with a High Efficiency Particulate Air filter

- > Do use a two bucket system for sugar soap and rinsing
- > Discard all disposable items and cleaning cloths in plastic bags
- > Dispose of contaminated water down the drain
- > Shower and wash your hair as soon as possible after you finish work
- > Wash work clothes separately from the family wash

### DON'T:

- > Reuse, sell or giveaway carpets. Carpets should be disposed of at the local waste transfer station/dump
- > Don't smoke, eat or drink near the work area and wash hands before doing any of these activities