

# SA Health Mental Health Pathways and protocols for managing abnormal/ adverse events

Below are some of the possible situations that may arise during a clozapine clinic. Quick reference pathways have been suggested to assist in resolution of the abnormal/adverse events with further reference where appropriate, to the Clozapine Management Clinical Guideline or TGA endorsed protocol, which in many cases will provide further information.

## Assessment

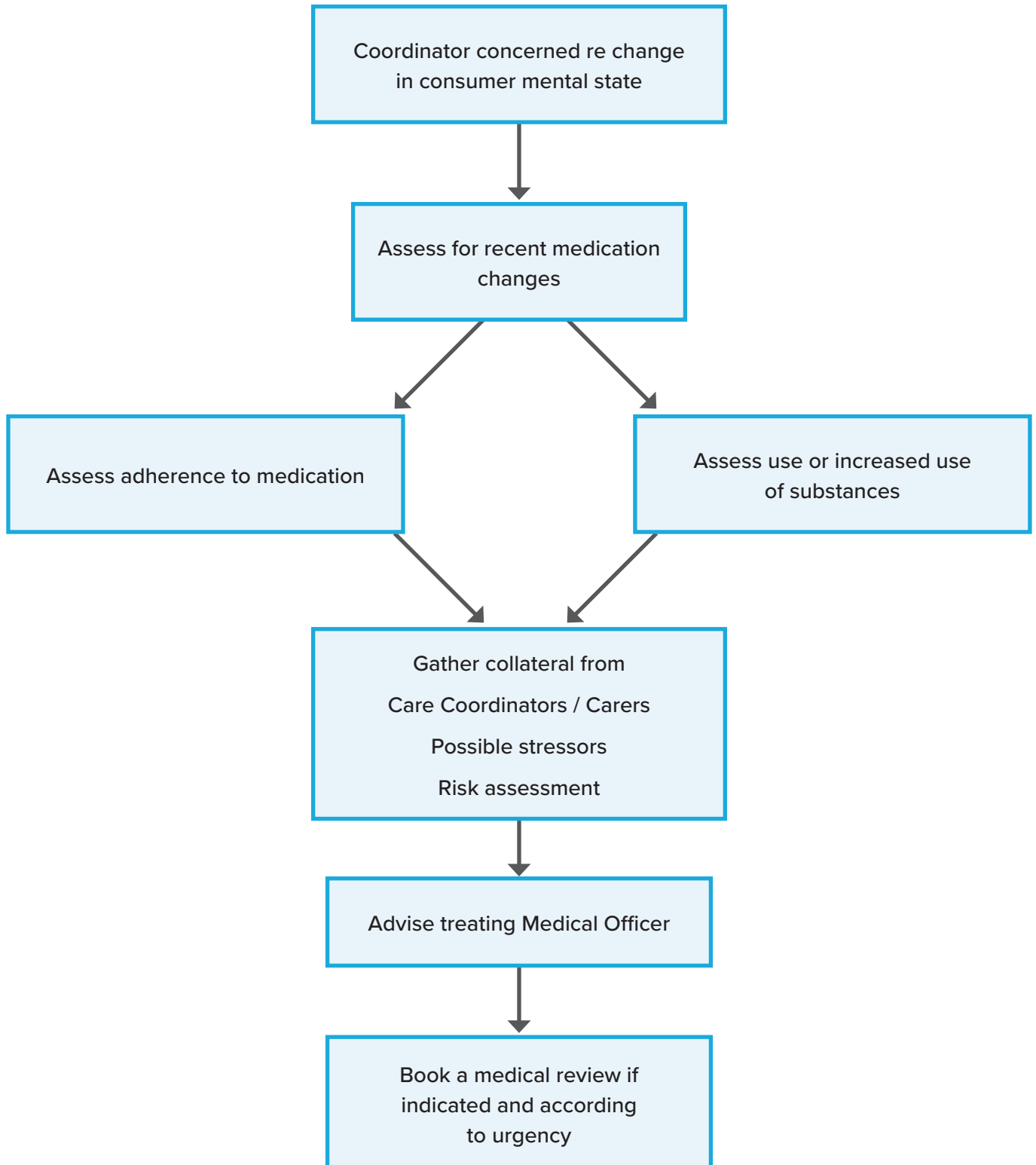
- > MSE
- > Drug interaction
- > Change in nicotine use
- > Change in caffeine use
- > Non – adherence
- > Signs and symptoms of infection
- > Cardiovascular health
- > Seizure activity
- > Extra Pyramidal Side Effects
- > Over sedation
- > Hyper-salivation
- > Constipation
- > Urinary symptoms
- > Sexual side effects
- > COVID-19 Vaccination

## Tests

- > Amber blood result
- > Red blood result
- > Abnormal glucose results on finger prick/recent lab testing
- > Abnormal Lipids results on recent lab testing
- > Abnormal Troponin or hs-CRP (high sensitivity CRP) results on recent lab testing
- > Abnormal ECG result
- > Abnormal echocardiogram result

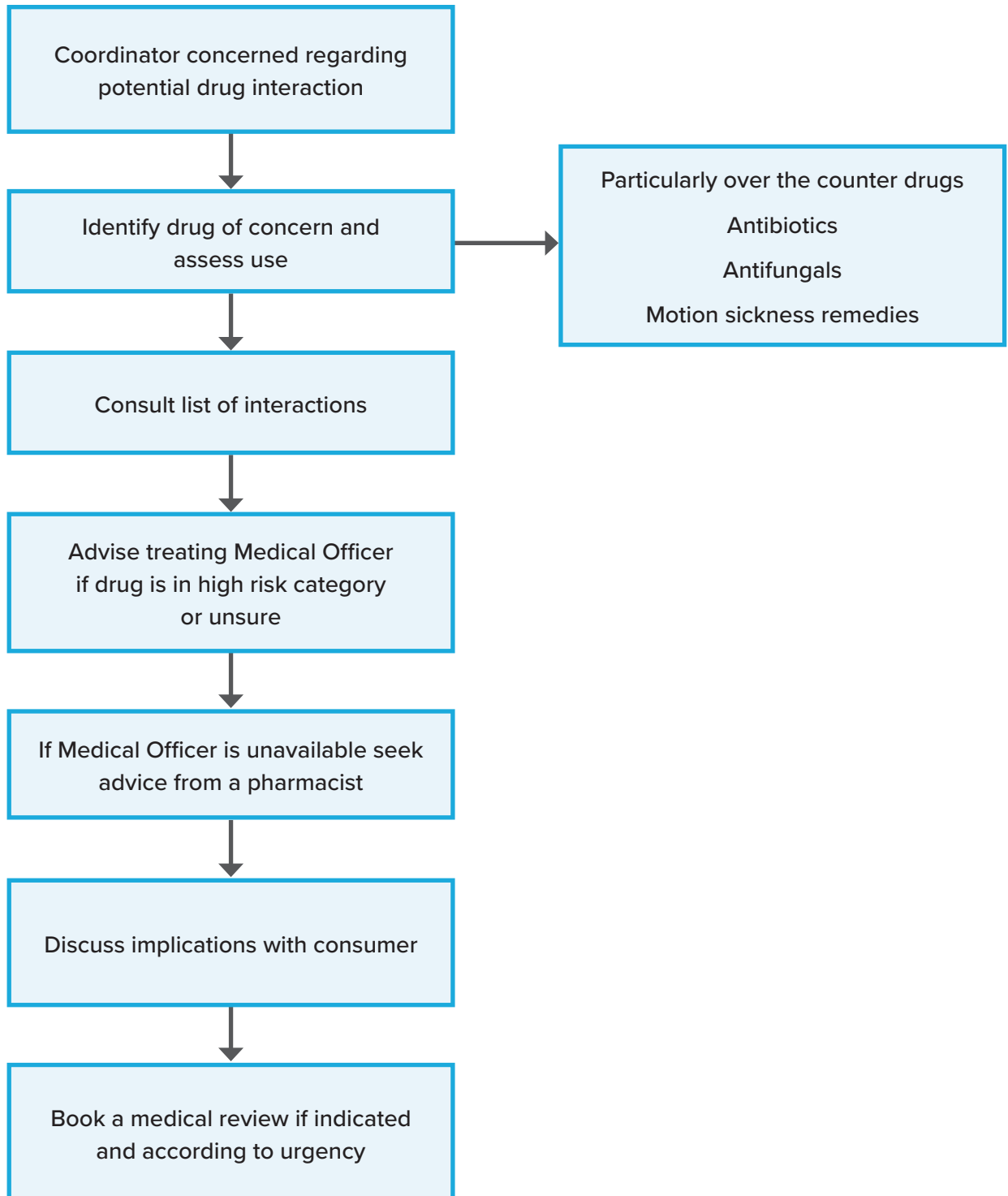
# Nurse Led Clozapine Clinics

## Mental State Examination



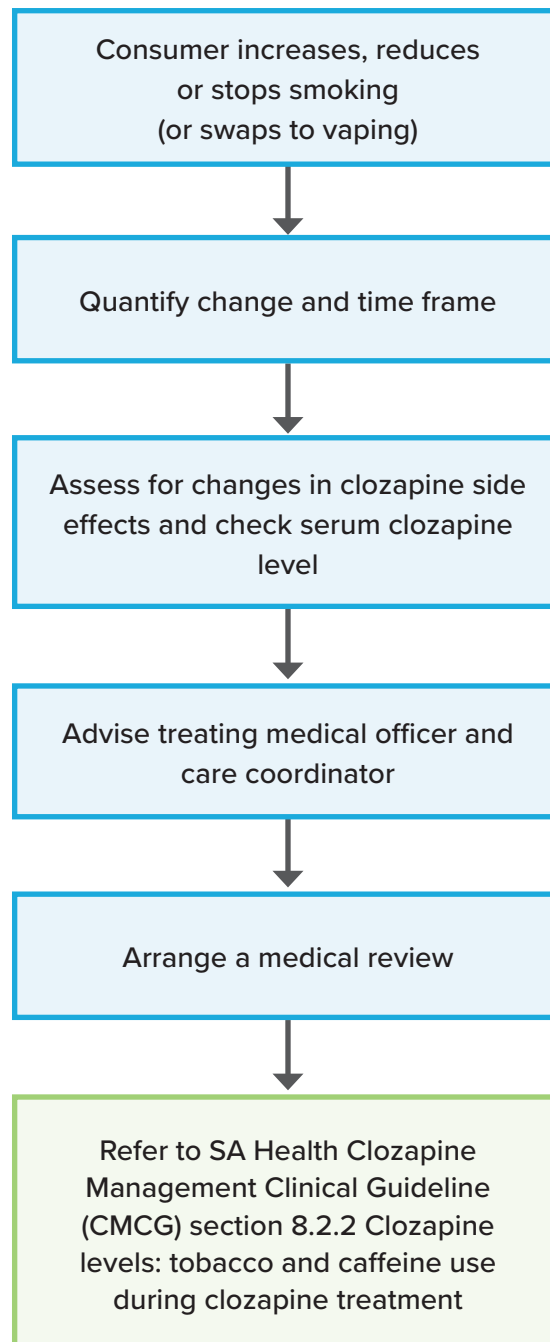
## Nurse Led Clozapine Clinics

# Drug Interactions



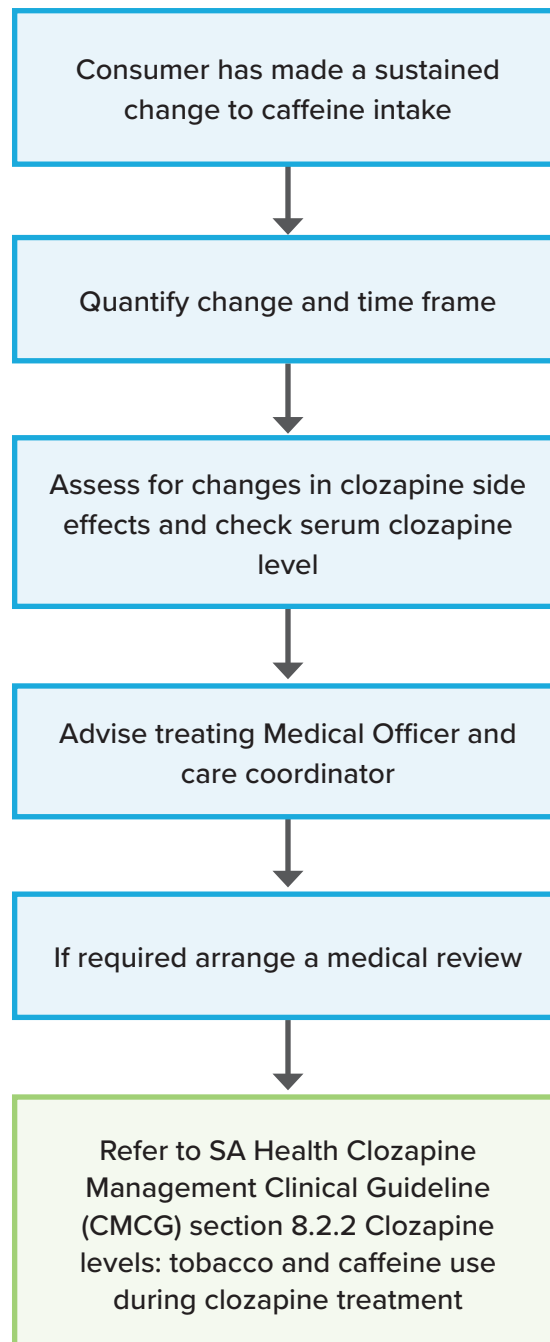
# Nurse Led Clozapine Clinics

## Change in nicotine use



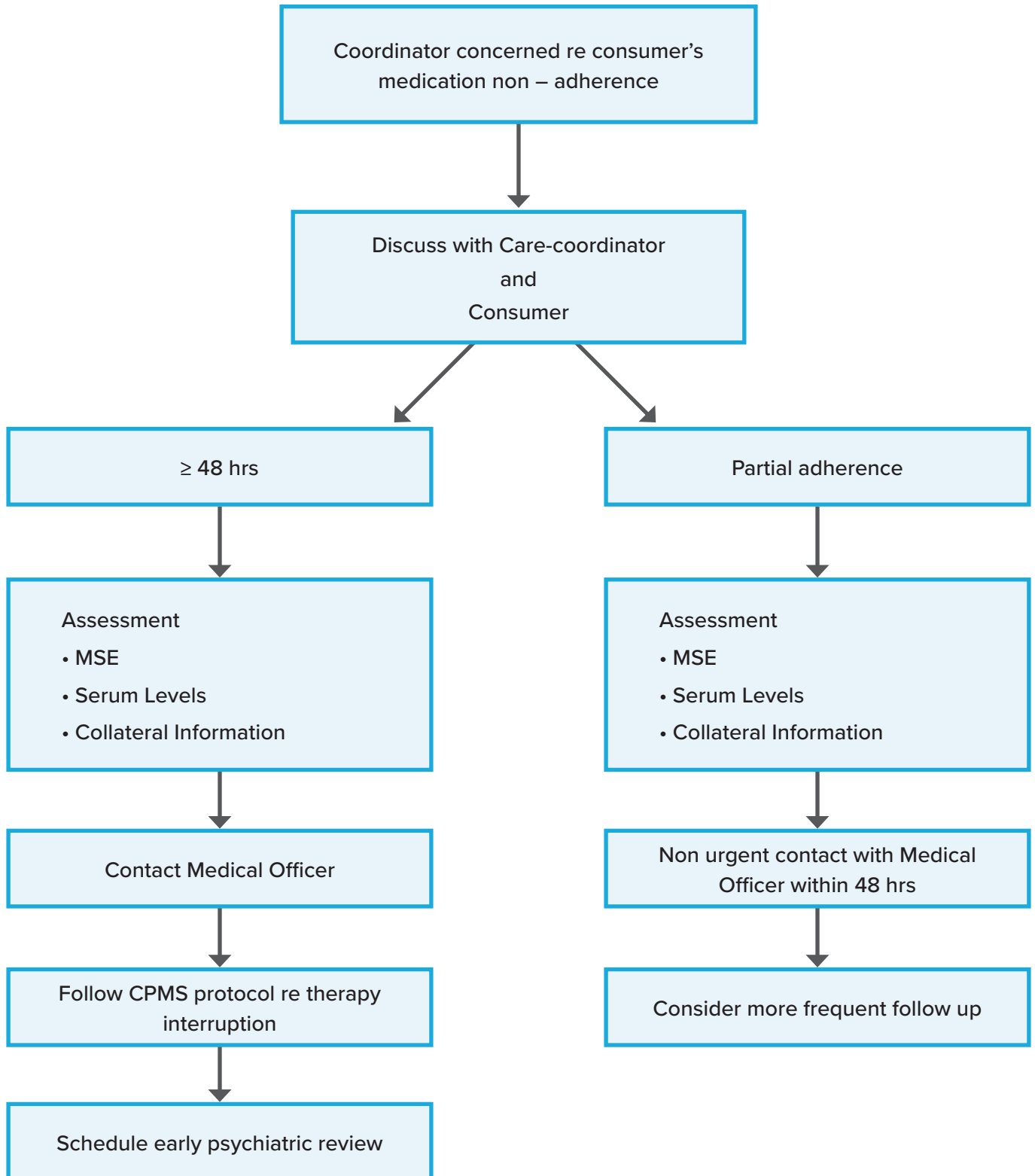
# Nurse Led Clozapine Clinics

## Change in caffeine use



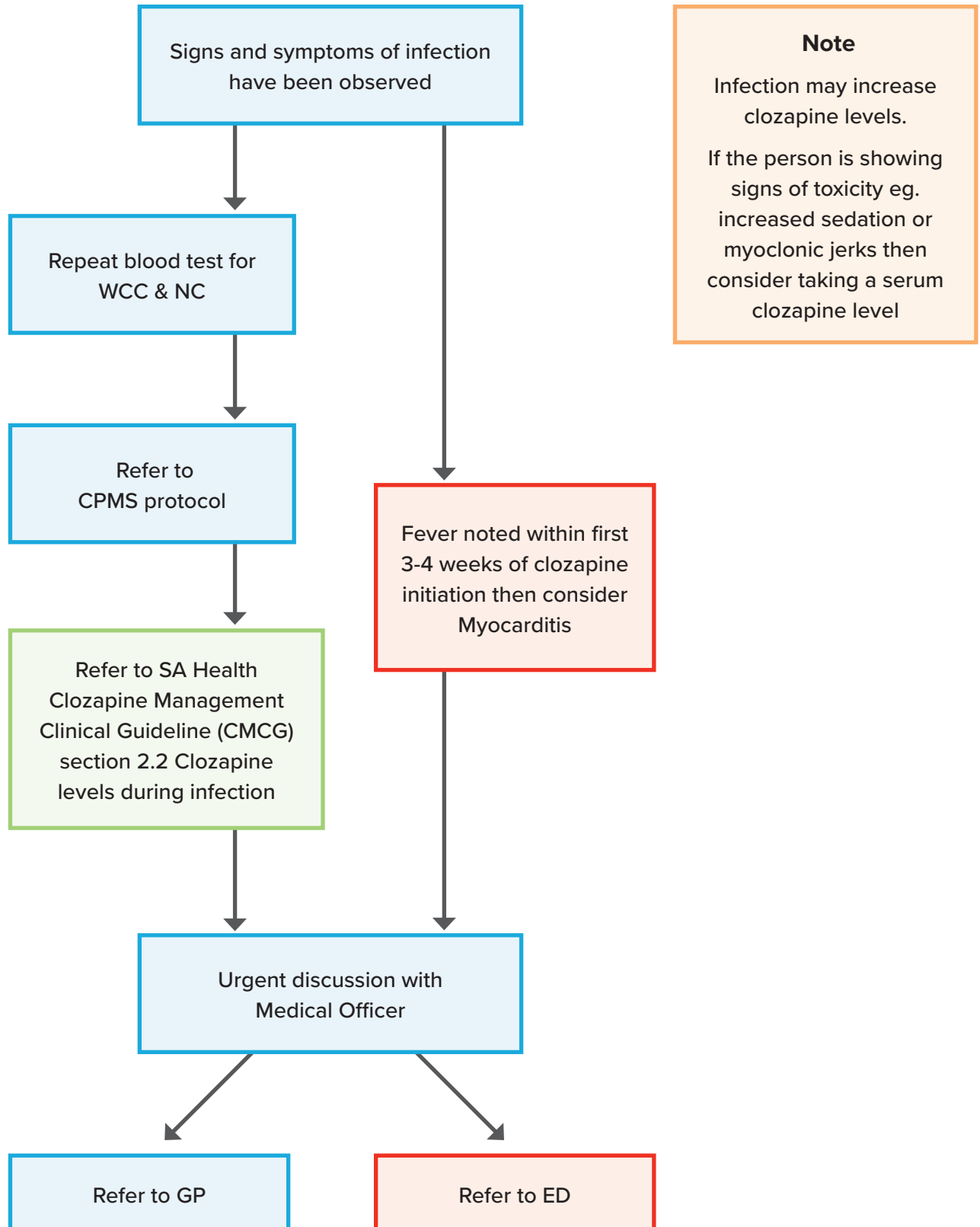
## Nurse Led Clozapine Clinics

# Medication Non – adherence



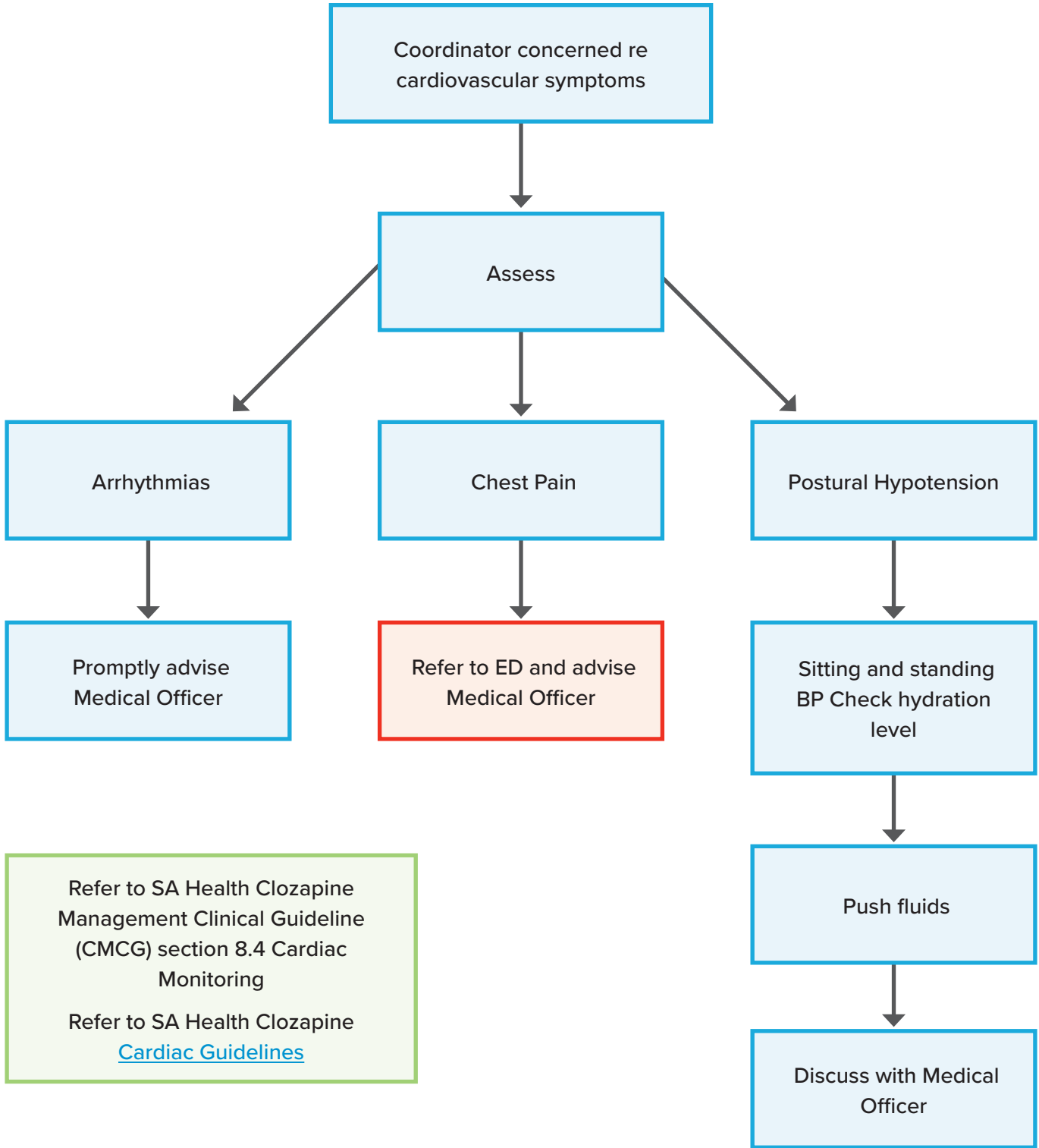
## Nurse Led Clozapine Clinics

# Signs and symptoms of infection



# Nurse Led Clozapine Clinics

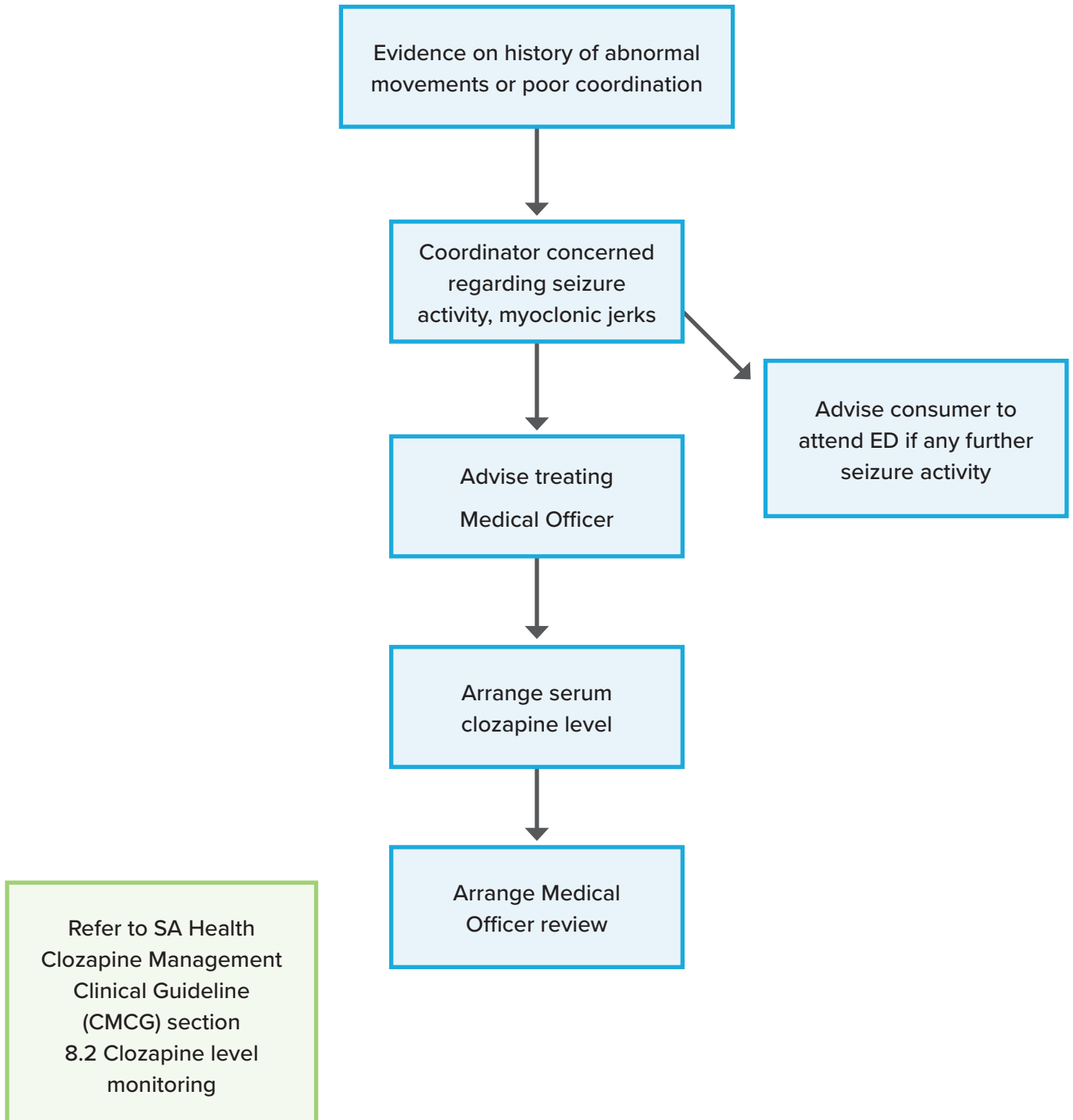
## Cardiovascular health





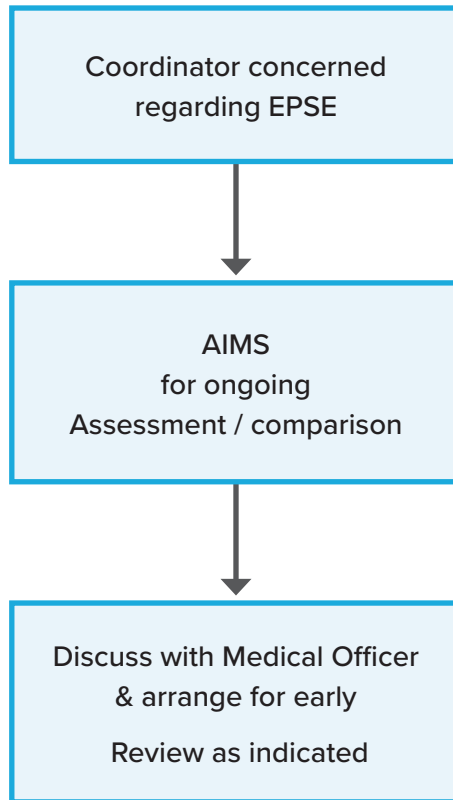
# Nurse Led Clozapine Clinics

## Seizure activity



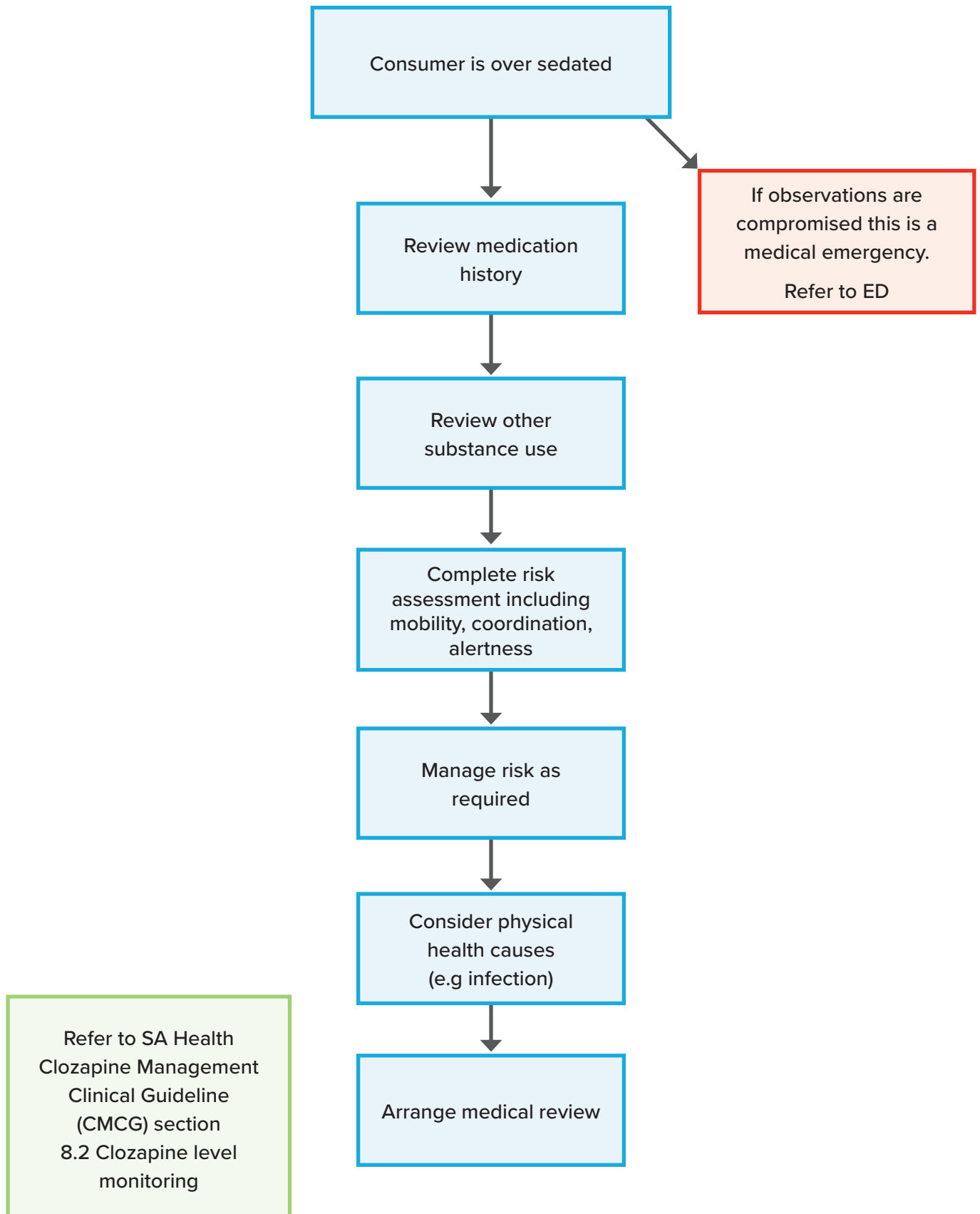
## Nurse Led Clozapine Clinics

# Extra Pyramidal Side Effects (EPSE)



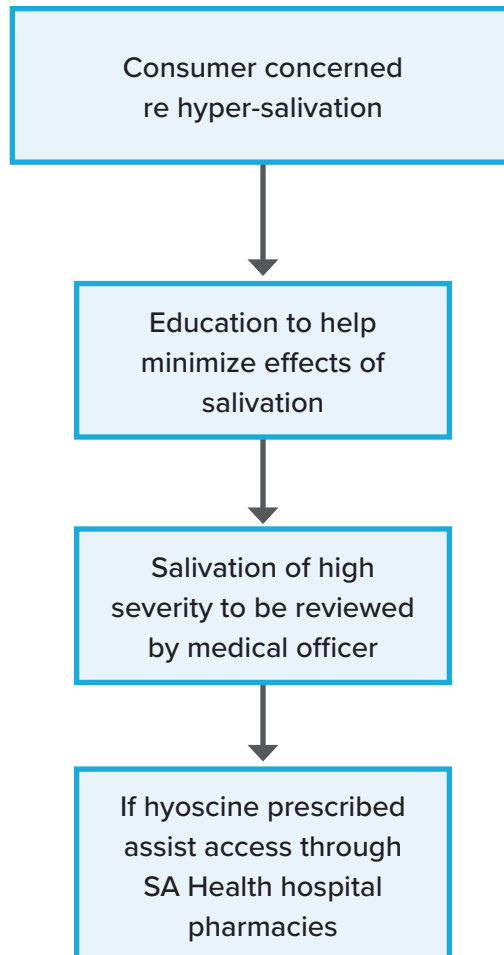
# Nurse Led Clozapine Clinics

## Over sedation



## Nurse Led Clozapine Clinics

# Hyper-salivation (Sialorrhea)



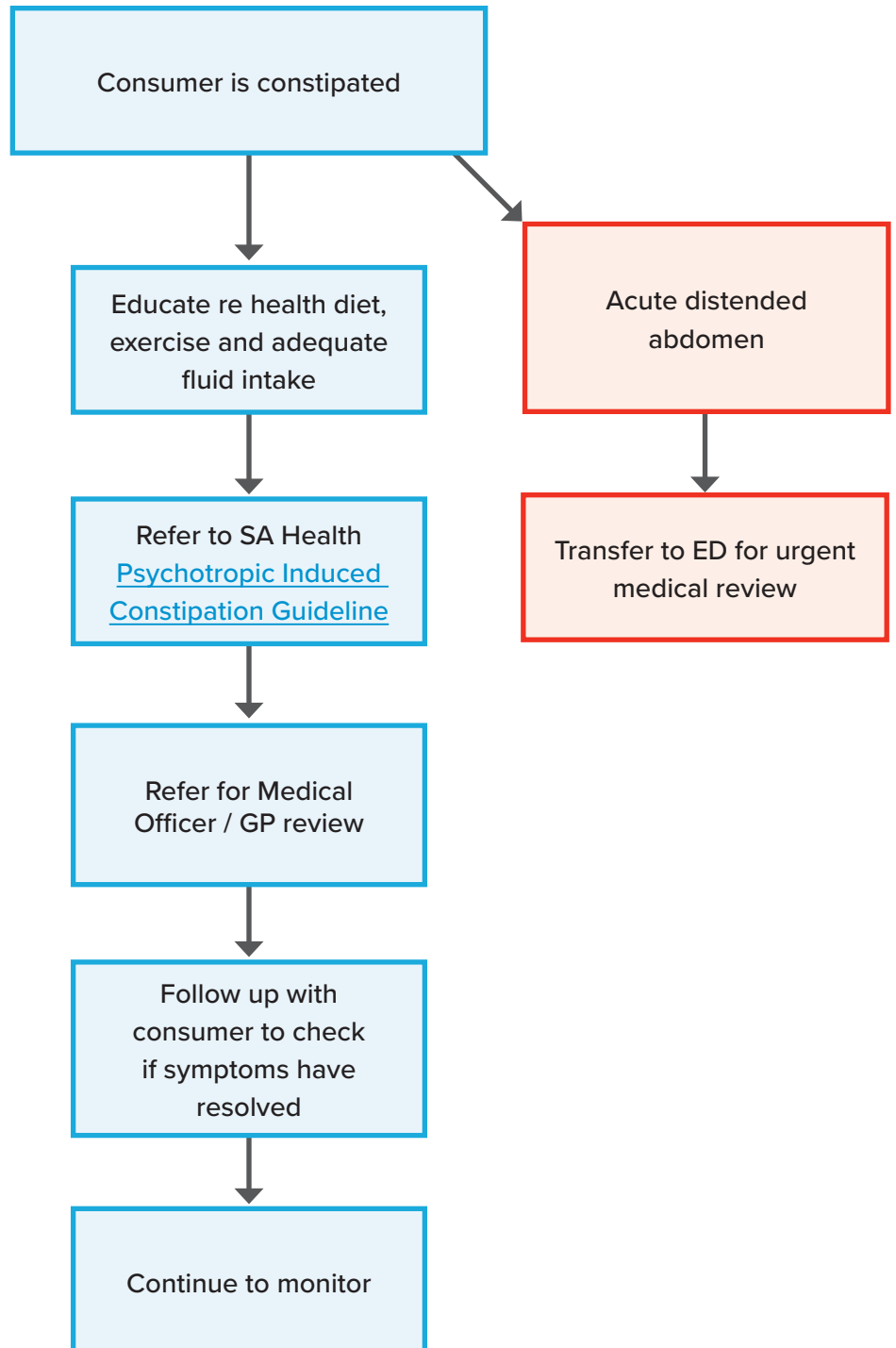
Refer to SA Health Clozapine Management Clinical Guideline (CMCG) section 8.7.2 Sialorrhea (hypersalivation)

### Note

Do not prescribe atropine drops.  
Refer to SA Health Off-label Use of Atropine Eye Drops for Clozapine-Induced Hypersalivation [Fact sheet](#)

# Nurse Led Clozapine Clinics

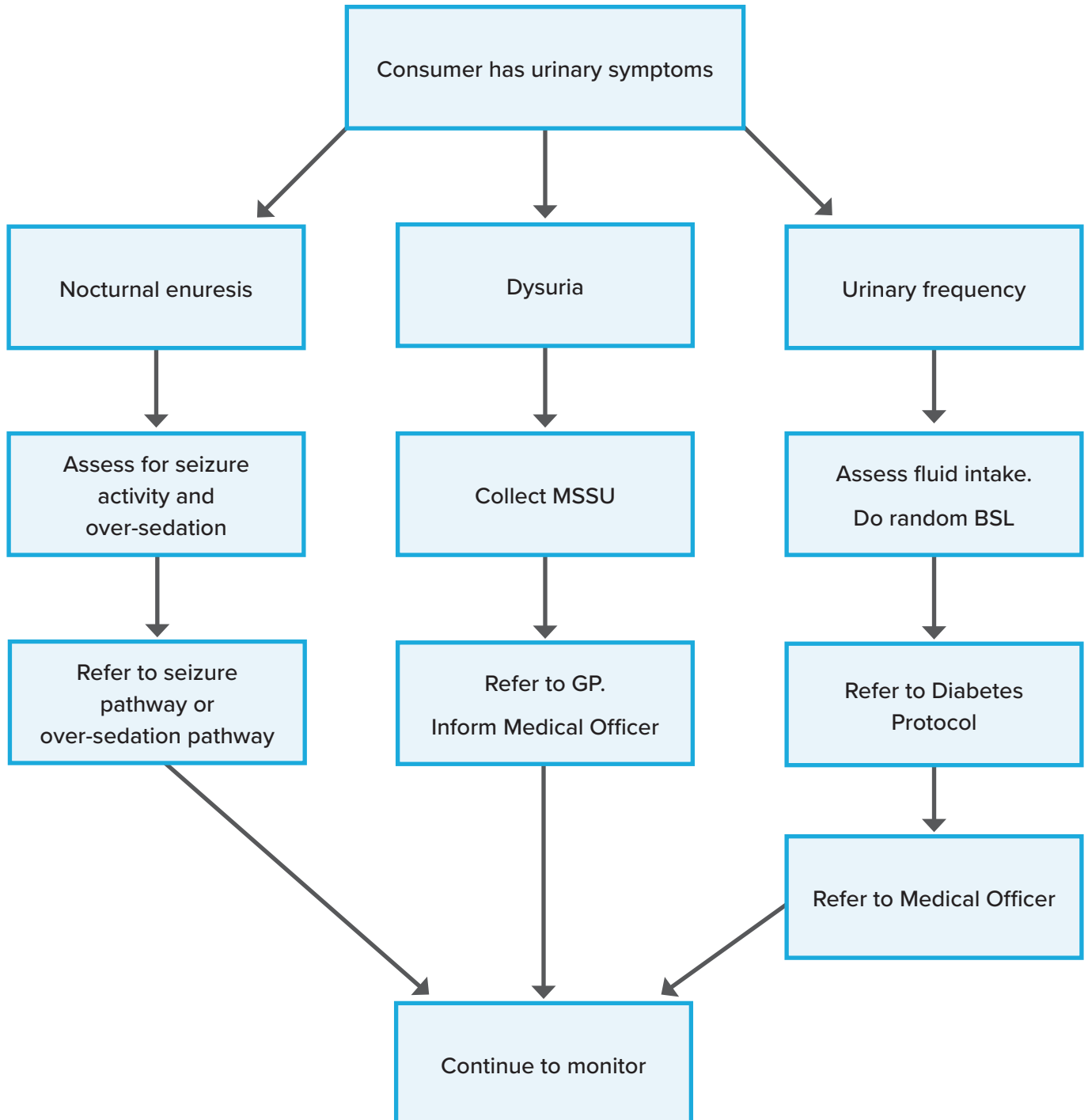
## Constipation



Refer to SA Health Clozapine Management Clinical Guideline (CMCG) section 8.7.1 Constipation

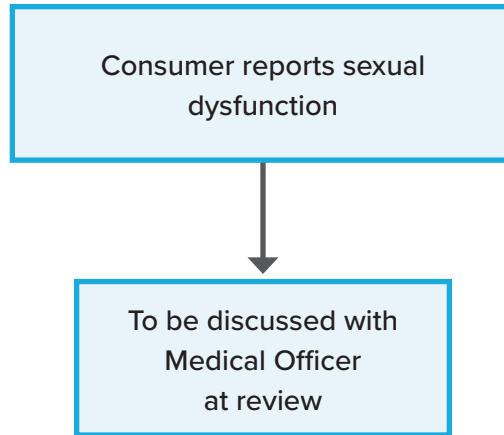
# Nurse Led Clozapine Clinics

## Urinary symptoms



## Nurse Led Clozapine Clinics

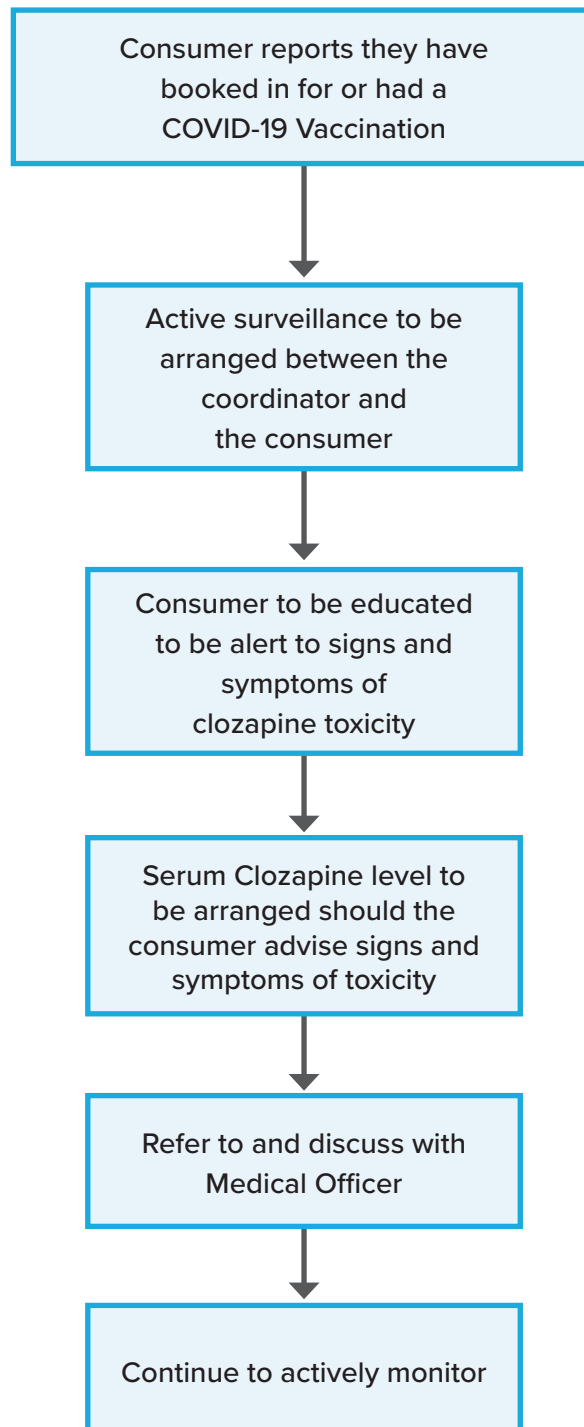
# Sexual side effects



# Nurse Led Clozapine Clinics

## COVID-19 Vaccination

All mental health consumers should be actively encouraged to have a COVID-19 vaccination and advised to contact the Clozapine Coordinator once they have booked in for or had the vaccination.



### Clozapine commencement

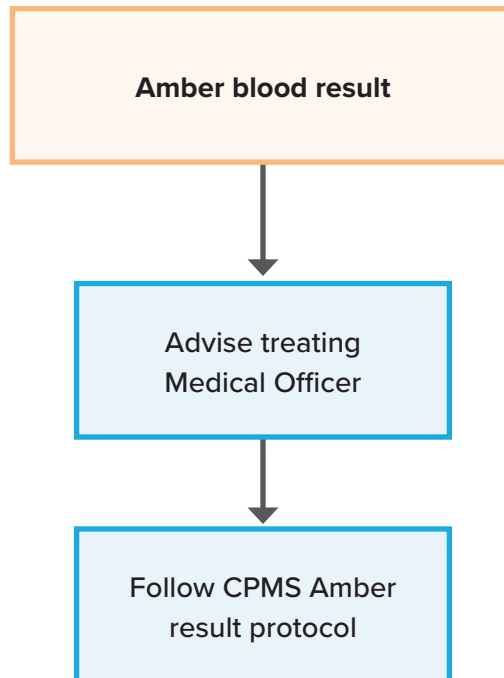
There is a rare risk of myocarditis post administration of mRNA COVID-19 vaccines which includes Comirnaty (Pfizer) and Spikevax (Moderna).

Taking this into consideration the CSMG advise delaying clozapine commencement where possible until 14 - 21 days post the second dose of an mRNA vaccine may avoid uncertainty as to which agent is responsible for emergent myocarditis.



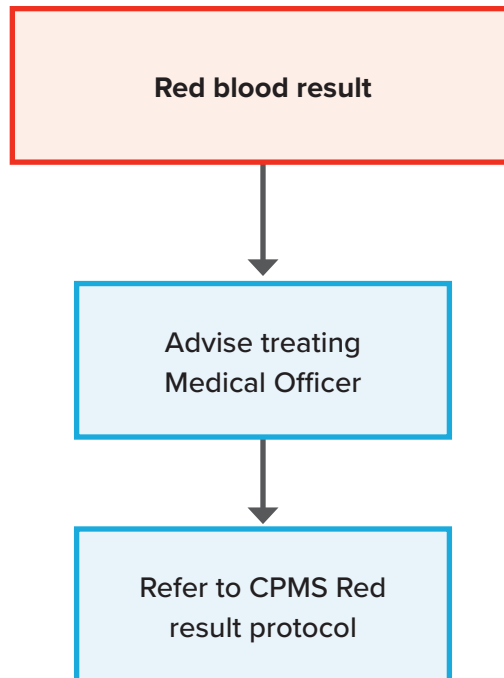
# Nurse Led Clozapine Clinics

## Amber blood result



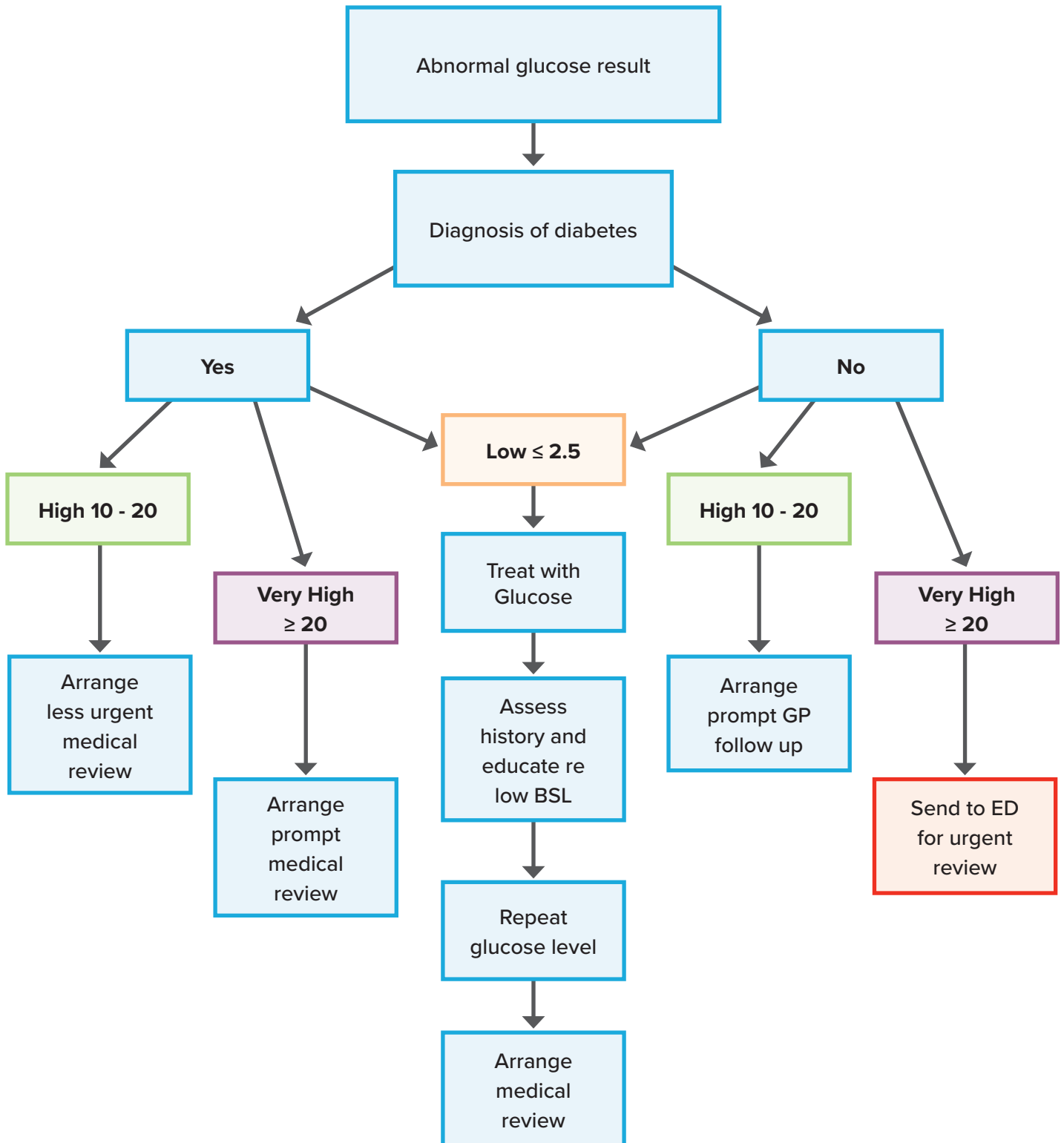
# Nurse Led Clozapine Clinics

## Red blood result



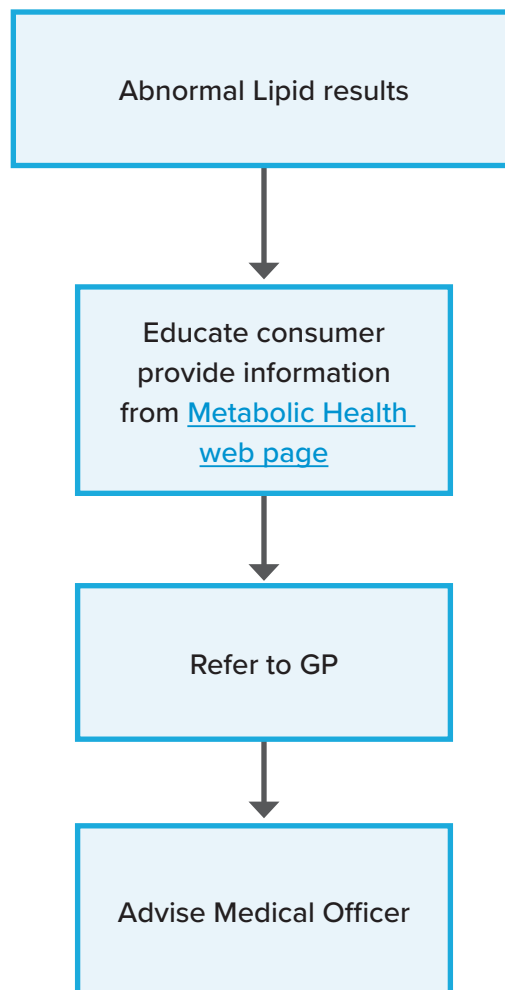
## Nurse Led Clozapine Clinics

### Abnormal glucose results on finger prick / recent lab testing



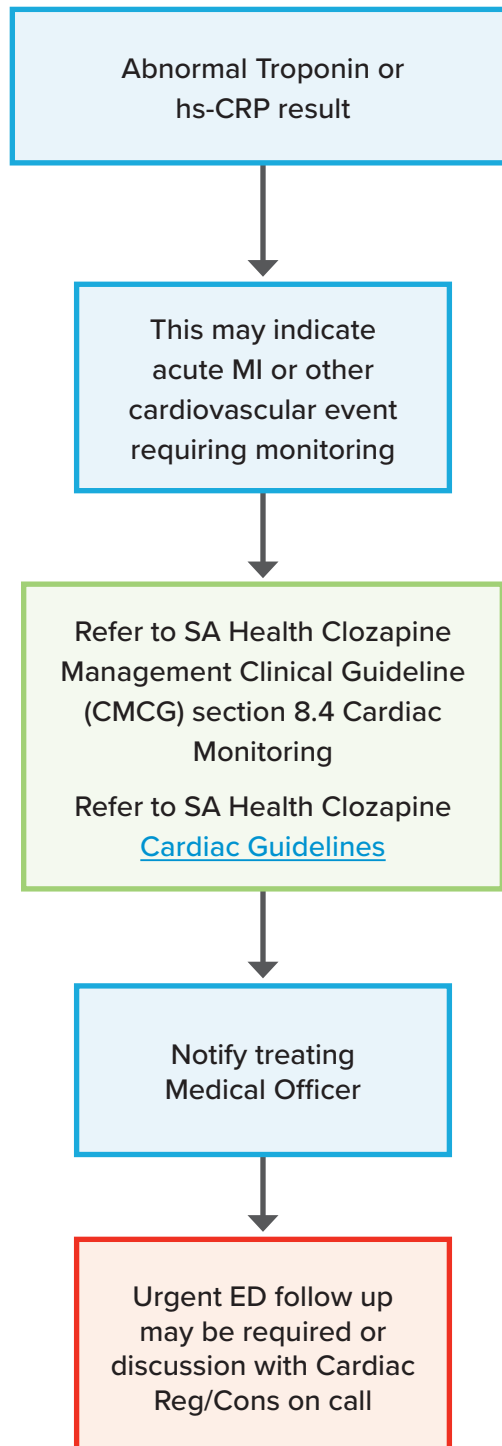
## Nurse Led Clozapine Clinics

### Abnormal Lipids results on recent lab testing



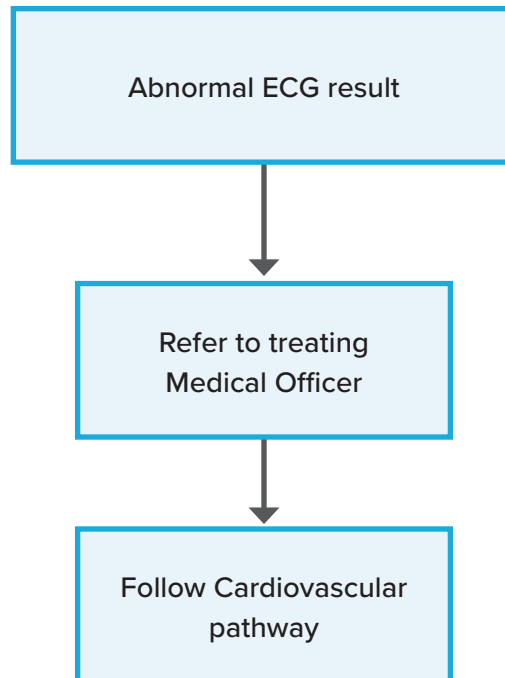
## Nurse Led Clozapine Clinics

Abnormal Troponin or high sensitivity  
C-Reactive Protein (hs-CRP) results  
on recent lab testing



# Nurse Led Clozapine Clinics

## Abnormal ECG result

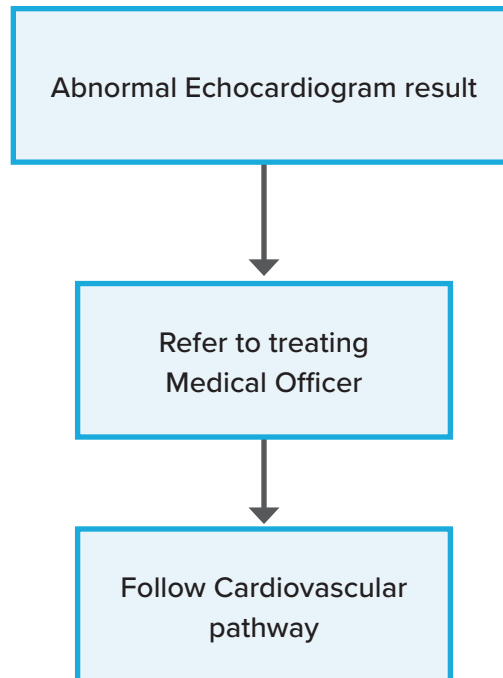


Refer to SA Health  
Clozapine Management  
Clinical Guideline (CMCG)  
section 8.4 Cardiac  
Monitoring

Refer to SA Health  
Clozapine  
[Cardiac Guidelines](#)

## Nurse Led Clozapine Clinics

# Abnormal echocardiogram result



Refer to SA Health  
Clozapine Management  
Clinical Guideline (CMCG)  
section 8.4 Cardiac  
Monitoring

Refer to SA Health  
Clozapine  
[Cardiac Guidelines](#)

## Nurse Led Clozapine Clinics

# Pathways and protocols daily occurrences

Management of CBE ordering, results and prescriptions

- Liaison with pharmacy, pathology services and treating MO
- Patient reminders
- Chasing results