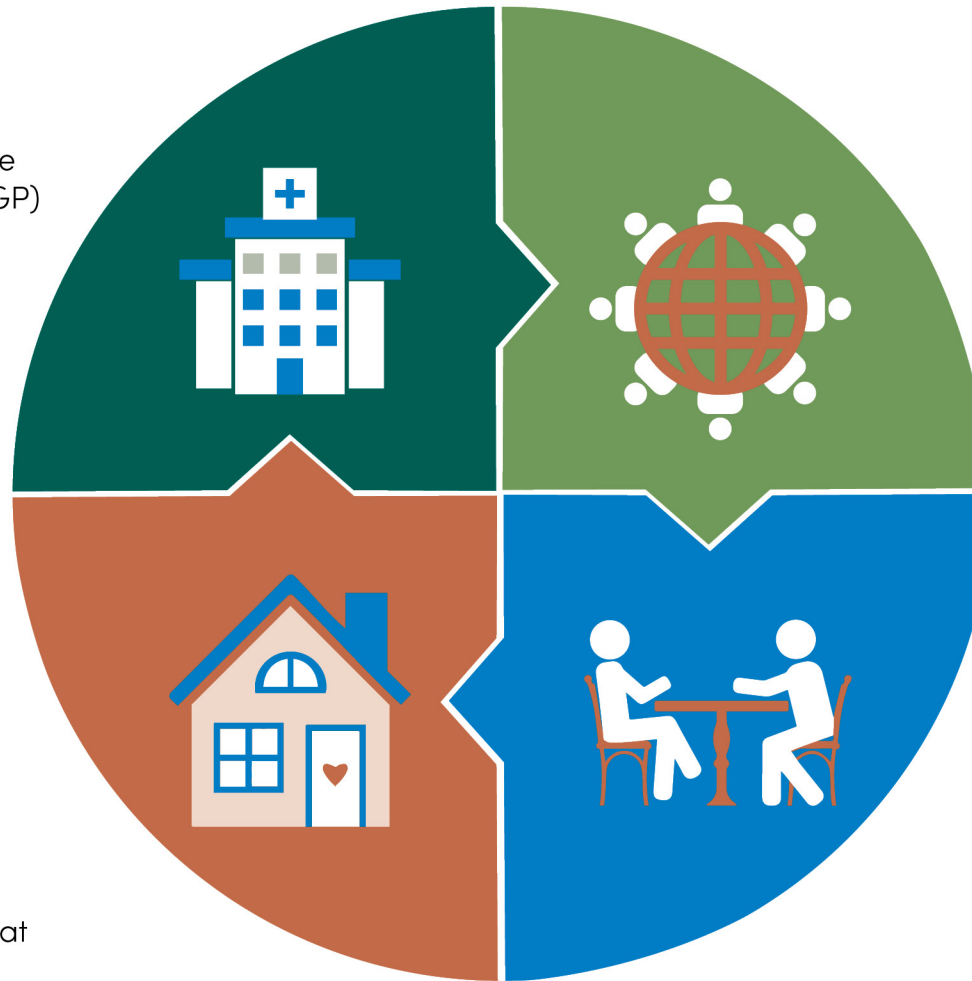


Keith and District Healthcare

PROPOSED MODEL OF CARE

Urgent Care

- Available 7 days per week
- Community Paramedic. Nurse Practitioner, SA Ambulance Service volunteers. General Practitioner (GP)
- Telehealth



Acute Care

- At home under the care of a General Practitioner (GP)
- Support from skilled health professionals
- Telehealth services
- Acute inpatient services provided at Bordertown Memorial Hospital

Community Health Hub

- Coordination service
- Dedicated Telehealth rooms & support
- Resident nursing & allied health
- Community Paramedic
- Nurse Practitioner
- Club Hub
- Community Farm/Garden
- Enhanced transport between Keith and District Healthcare & Bordertown Memorial Hospital

Aged Care

- 26 updated aged care rooms with en-suite
- Cafe
- Gymnasium
- Clinic space
- Hairdresser
- Inviting outdoor spaces