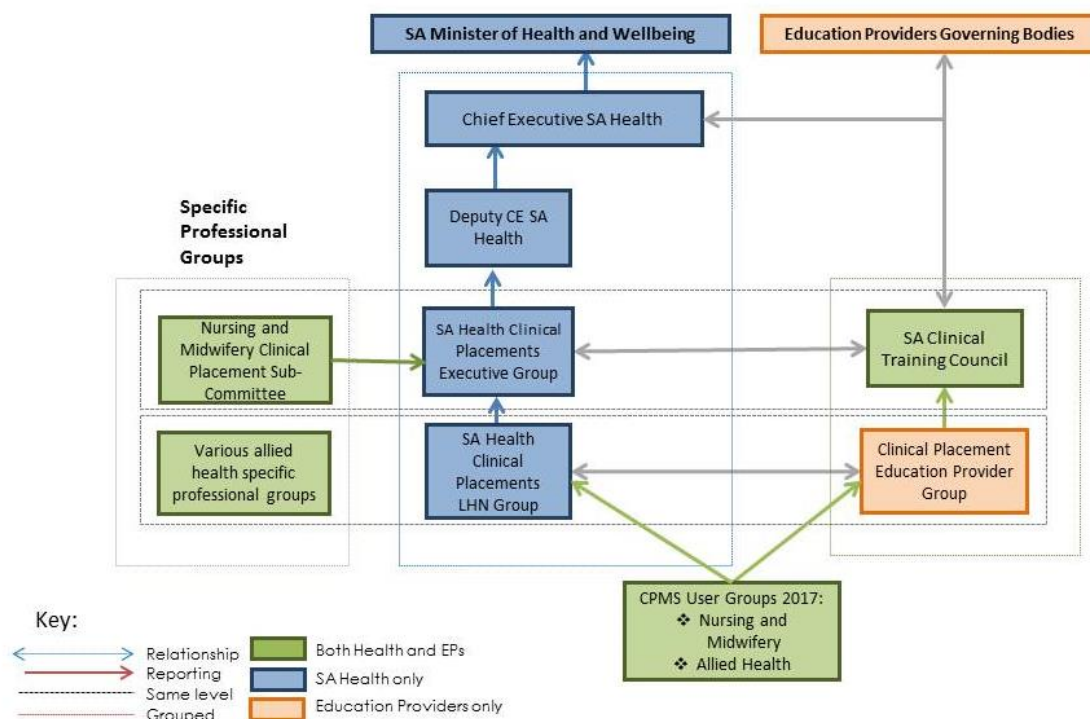


SA Health Clinical Placement Executive Group

Terms of Reference

SA Health - Better Placed Clinical Placements Governance Structure - 2018



PURPOSE

SA Health is the major provider of clinical placements for health profession courses in South Australia. This is within an environment of increasing pressure on resources and increasing numbers of enrolments. SA Health recognises the need to provide strategic leadership to ensure that services offer quality clinical placements to train under, new and post graduates to meet current and future workforce needs.

The governance (diagram above) established within the SA Health's clinical placement framework for the management and governance of clinical placements, *Better Placed: Strengthening our Clinical Placement System* will ensure the effective management of clinical placements across SA Health for all health professions (refer to Appendix 1).

The SA Health Clinical Placement Executive Group will provide strategic leadership and policy direction to enhance clinical training including responsibility for

- Setting the strategic direction and ensuring a governance structure is in place for the efficient delivery of clinical placements.
- Providing strategic advice on a multi- sectorial and multi-disciplinary approach for the future of clinical training in South Australia.
- Developing, communicating and monitoring compliance with SA Health policy in relation to clinical placements.
- Supporting LHNs in implementing strategies to enhance clinical placements at a local level.
- Fostering collaborative partnerships with education providers including input on training curricula that meet the needs of healthcare service models within SA Health.
- Determining appropriate resourcing to enable effective clinical placement management and sustainability in clinical placement and education.
- Leading negotiations with education providers on business rules to support consistency in the use of standard terms within agreement for clinical placements and processes in clinical placement administration and management.
- Contributing to the fostering of a culture of learning and development.



	- Developing and providing a centralised online repository of relevant information regarding clinical placement requirements and activities.														
DECISION MAKING RESPONSIBILITIES	CPEG is a strategic and operational, inclusive decision making group and will apply due diligence to provide advice when requested to inform, make recommendations and/or provide options. They will where possible determine risks involved in recommendations and suggest mitigation strategies. CPEG will have responsibility to ensure clear communication of any recommendations or decisions made to the relevant stakeholders.														
REPORTING RELATIONSHIPS	The Clinical Placement Executive Group reports to the Deputy Chief Executive, Health System Support and Redesign.														
CLINICAL PLACEMENT EXECUTIVE GROUP MEMBERSHIP	<table border="1"> <tr><td>Chair, Manager Health Education and Strategic Engagement, Better Placed</td></tr> <tr><td>Executive Representative CALHN (Allied Health)</td></tr> <tr><td>Executive Representative NALHN ((Nursing and Midwifery)</td></tr> <tr><td>Executive Representative SALHN (Nursing and Midwifery)</td></tr> <tr><td>Executive Representative WCHN (Nursing and Midwifery)</td></tr> <tr><td>Executive Representative CHSA LHN (Allied Health)</td></tr> <tr><td>Executive Representative SA Statewide Services (Chief Scientist ,SA Pathology)</td></tr> <tr><td>Executive Representative SA Ambulance Service</td></tr> <tr><td>Chair, Clinical Placement LHN Group</td></tr> <tr><td>Chief Medical Officer</td></tr> <tr><td>Chief Nurse & Midwifery Officer</td></tr> <tr><td>Chief Allied and Scientific Health Officer and Health Education Lead</td></tr> <tr><td>Director, Workforce</td></tr> <tr><td>Administrative Support</td></tr> </table>	Chair, Manager Health Education and Strategic Engagement, Better Placed	Executive Representative CALHN (Allied Health)	Executive Representative NALHN ((Nursing and Midwifery)	Executive Representative SALHN (Nursing and Midwifery)	Executive Representative WCHN (Nursing and Midwifery)	Executive Representative CHSA LHN (Allied Health)	Executive Representative SA Statewide Services (Chief Scientist ,SA Pathology)	Executive Representative SA Ambulance Service	Chair, Clinical Placement LHN Group	Chief Medical Officer	Chief Nurse & Midwifery Officer	Chief Allied and Scientific Health Officer and Health Education Lead	Director, Workforce	Administrative Support
Chair, Manager Health Education and Strategic Engagement, Better Placed															
Executive Representative CALHN (Allied Health)															
Executive Representative NALHN ((Nursing and Midwifery)															
Executive Representative SALHN (Nursing and Midwifery)															
Executive Representative WCHN (Nursing and Midwifery)															
Executive Representative CHSA LHN (Allied Health)															
Executive Representative SA Statewide Services (Chief Scientist ,SA Pathology)															
Executive Representative SA Ambulance Service															
Chair, Clinical Placement LHN Group															
Chief Medical Officer															
Chief Nurse & Midwifery Officer															
Chief Allied and Scientific Health Officer and Health Education Lead															
Director, Workforce															
Administrative Support															
CO-OPTED MEMBERS	The Executive Group may co-opt other additional members as required such as the Director, Data and Reporting Services, Director Quality & Safety, Representative SA Dental Service.														
EXECUTIVE SPONSOR	Deputy Chief Executive.														
DELIVERABLES	<p>Establishment of good governance systems and strategic goals for the management of clinical placements across SA Health for all professions.</p> <p>Establishment of criteria which education providers are required to evidence when seeking clinical placement agreement requests across SA Health.</p> <p>Establishment of clear governance for the efficient delivery of clinical placements</p> <p>Development of policies, processes and rules for clinical placement management and quality</p> <p>Supporting Local Health Networks in implementing activities which are aligned to the strategic direction and goals of Better Placed Strategic Plan</p> <p>Reporting on the progress and achievements of Better Placed</p> <p>Strengthening of partnership arrangements and collaboration between health service providers and education providers to enhance the management of clinical placements</p>														
MEETING TIME	<p>Bimonthly meetings around one and a half hour's duration per meeting.</p> <p>The second Tuesday of the month, 3 - 4.30pm at CitiCentre Building, 11 Hindmarsh Square, Adelaide.</p> <p>Extra meetings may be called if required. Tele-conference facilities are available.</p>														
QUORUM	Half the membership plus one														