



Keith and District Health Hub Newsletter

November 2022

Welcome to the first edition of the Keith and District Health Hub Newsletter

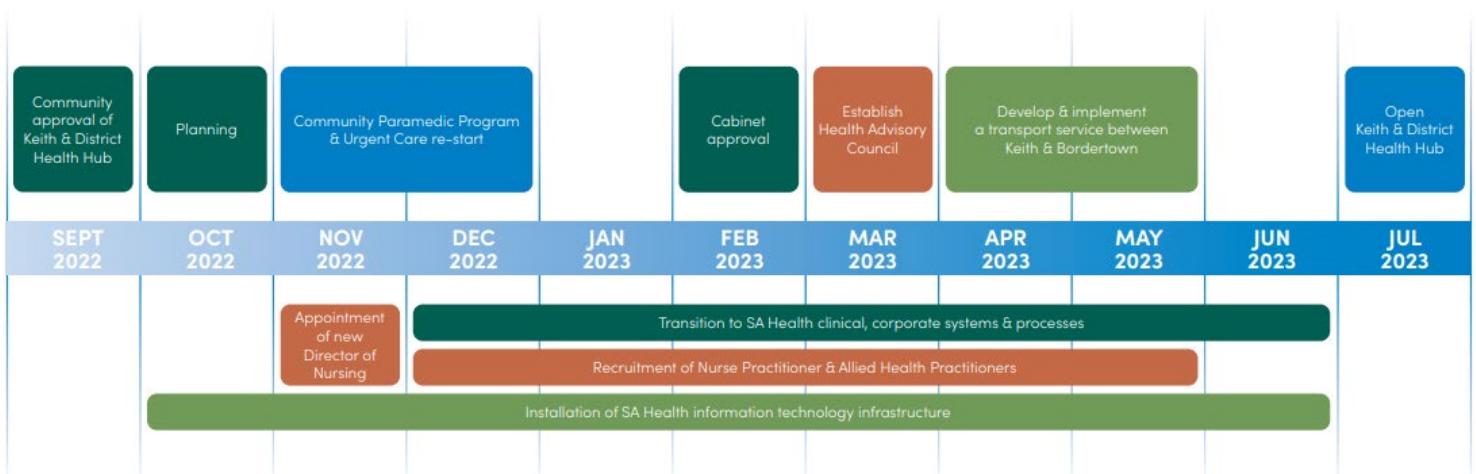
The Keith and District Hospital and the Limestone Coast Local Health Network has been working together to design an improved model of primary health and aged care services for the Keith community and surrounds.

In these newsletters, we will share with you the progress of transitioning the Keith and District Hospital into the public healthcare system. Aligning to our project timeline (detailed below) we will highlight key milestones and achievements as well as issues and hurdles we face along the way. We will also provide you with further detail on key aspects of the model of care and answer frequently asked questions as we move forward with implementation.

If you have not yet subscribed to the regular updates direct to your inbox, you can sign up to receive regular updates at <https://bit.ly/3DTIAiW>.

If you have any feedback or queries, feel free to get in touch with the project team at health.lclhnkeithtransitionproject@sa.gov.au

Transition timeline



During transition, the Keith and District Hospital Board will continue to be responsible for the governance and operations of Keith and District Hospital, working in close partnership with Limestone Coast Local Health Network.

From 1 July 2023, it is anticipated that the Limestone Coast Local Health Network will have responsibility of the Keith and District Health Hub with the support of the new Health Advisory Council, which is proposed to include members from the existing Keith and District Hospital Board.

Appointment of Interim Executive Officer/Director of Nursing

We are pleased to share that this month, Annabel Schwarzrock was appointed as the Interim Executive Officer/Director of Nursing. One of the first major appointments under the new model of care for Keith and District Hospital, Annabel has extensive experience in senior health leadership roles having held senior posts both overseas and in Australia.

Annabel trained initially as a dentist before undertaking a career change to nursing. She has previously worked at Keith and District Hospital as a Registered Nurse over several years, is a former resident of Tintinara and currently holds the post of Nurse Unit Manager at Kingston War Memorial Hospital.

Annabel is already a member of senior leadership groups within the Limestone Coast Local Health Network and is extremely well placed to help Keith and District Hospital transition into the Local Health Network.

We wish her all the best in her new role!



Community Paramedic Recruitment

Recruitment for the Community Paramedic positions is currently in progress through SA Ambulance Services. Keith and District Hospital and the Limestone Coast Local Health Network are also working together to create the new position of Nurse Practitioner prior to advertising of that role.

One question we have received this month is if the Community Paramedic is able to see children. The answer to this is yes - the Community Paramedic can provide emergency care to children. However, treatment guidelines require that children are also seen by a medical officer prior to being discharged. Currently this would involve transport to Bordertown Hospital, though alternate options are being explored including the use of a virtual medical service. We will provide updates on this in future editions of this newsletter.

Help us choose the final name for the model of care!

We're seeking your help to choose the final name for the new model of health care for the Keith community and surrounds. Following community consultation, we have narrowed the options down to the two potential names below. Or if you have an alternative suggestion, feel free to let us know in the text box.

To vote, simply visit: <https://forms.office.com/r/js3vuGrFUQ> and choose between either:

- Keith and District Health Hub
- Keith and District Healthcare

If you do not have access to a computer, manual voting slips will be available at the Keith and District Hospital and local businesses.

Please let us know your preference by **Friday 2 December 2022**. Thank you so much for your help!

Glossary of terms and acronyms

CP	Community Paramedic
HAC	Health Advisory Council
KDH	Keith and District Hospital
LCLHN	Limestone Coast Local Health Network
SAAS	South Australia Ambulance Service

For more information

Limestone Coast Local Health Network
Keith and District Hospital Transition Project

Telephone: (08) 8721 1577

sahealth.sa.gov.au/KeithHealthHub

OFFICIAL: Public

© Limestone Coast Local Health Network, Government of South Australia.

