

New Mount Barker Hospital Development – Concept Designs

We are pleased to share initial design concepts, which have been prepared by the design team in consultation with the local communities, clinicians and key clinical partners. These design concepts are indicative design concepts only and artist impression only.

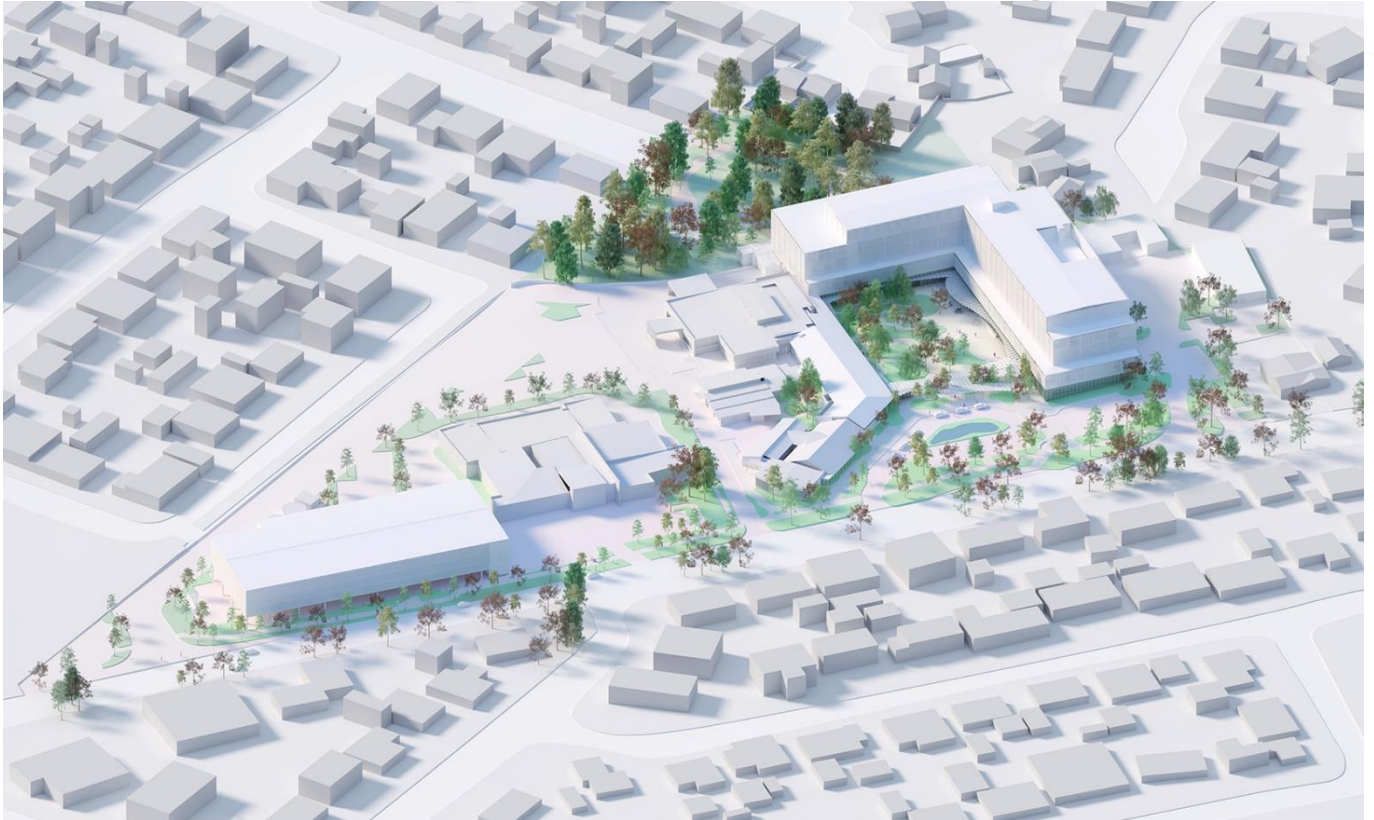


Image 1: A site aerial of the New Mount Barker Hospital Development

CURRENT BLOCK + STACK

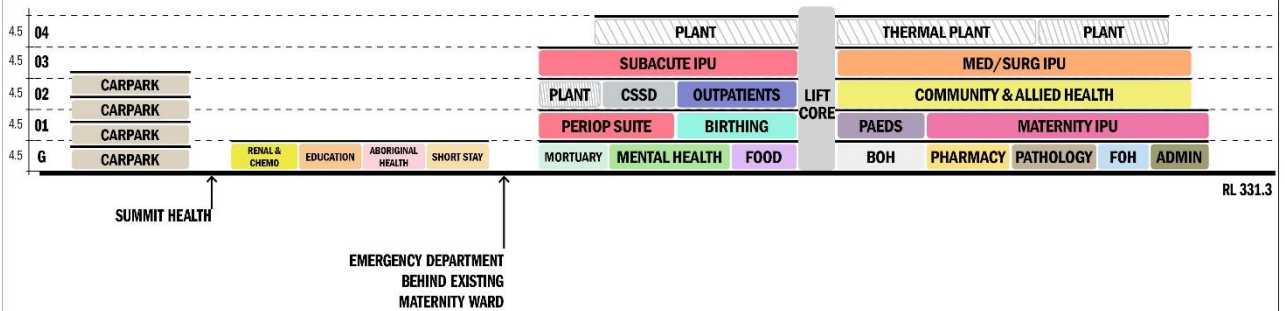


Image 2: The NMBH 'Block and Stack' – diagrammatic representation of clinical adjacencies showing proposed location of functions and services across floors and levels of the new building site.

FOH – Front of House

BOH – Back of House

IPU – Inpatient Unit

CSSD – Central Sterile Services Department

PERIOP – Perioperative

PAEDS - Paediatrics



Image 3: Artist impression of the arrival experience at the NMBH, not to accurate scale and mature trees shown are for illustrative purposes only.